

Specification

Order Code

ST104A-HB-L-I2400

Description

1U four hot-swap

M/B Form Factor

INTEL S2400SC2

Processor

Supports dual intel

Support Backplane

6 Gb/s SATA SAS

Front bezel

Option

Chassis Dimension

D x W x H (mm) 655 x 440 x 44 (mm)

D x W x H (inch) 25.79" x 17.32" x 1.73"

Power Supply.

Form Factor 1U(left set)

Drive Bay

3.5" or 2.5" HDD; 4 (MAX=4)

Slim CD-ROM 1

Generality

Metal Material SGCC/SECC (Option)

Metal Thickness 1.0mm+1.2mm

Plastic Material Type ABS

Expansion Slots

Cross card 1

System Cooling

Right set Standard 2 * 4056 + 4 * 4028 ball fan

I/O Gasket

Customize

Slide Rails

Option

Front Panel

Front Control Power On/Off System Reset

Power LED*1

HDD Activity LED*1

LAN Activity LED*2

System warning LED*1

USB Ports*1

Indicator

Ports

Shipping Information*

Net Weight (Chassis Only) 7.7kg

Gross Weight (w/Packing) 11kg

Cubic Feet 770*585*162 mm

20' 444 Box

Container 40' 920 Box

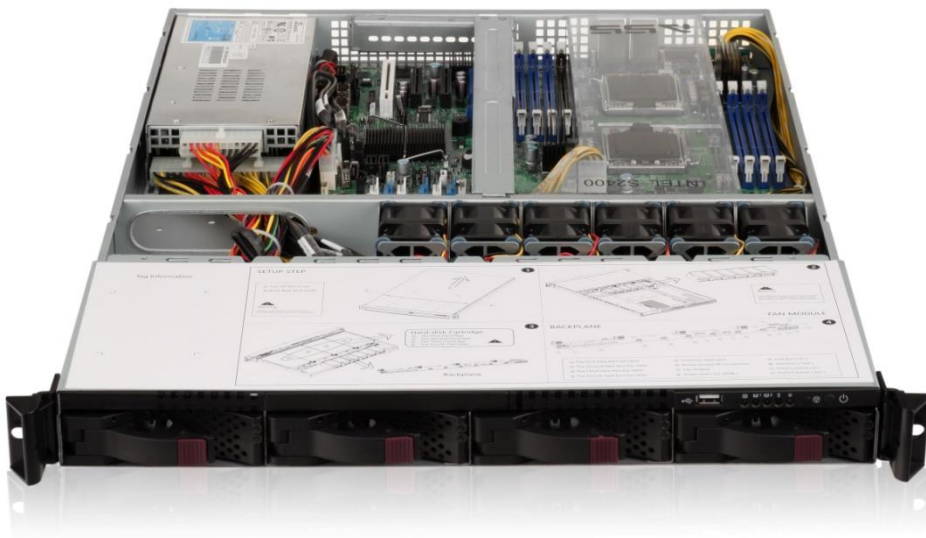
Information 40' H 1027 Box

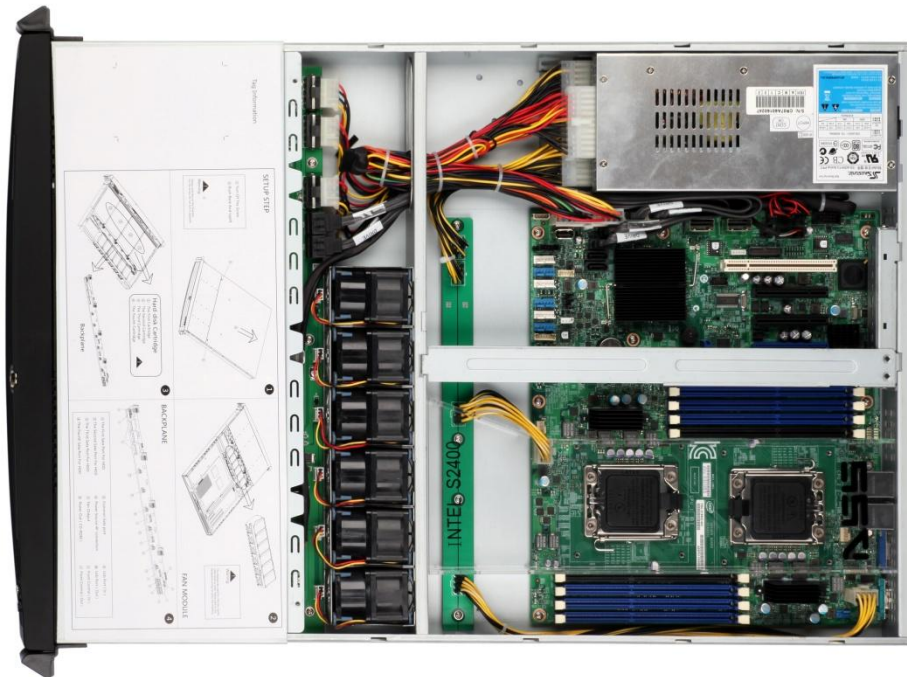
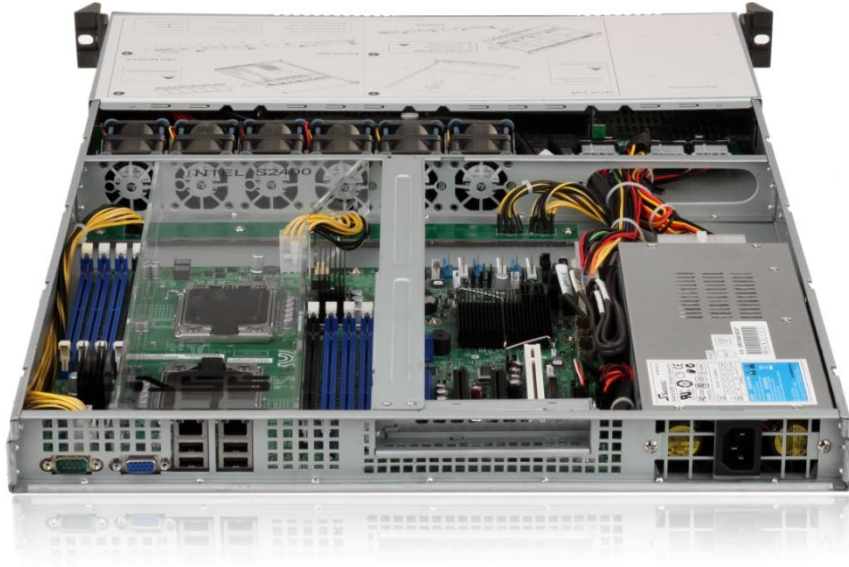
Standard Packing List

Part Category	Qty	Description
Chassis	1	1U chassis base
HDD Trays	4	For 3.5" or 2.5" HDD
Cables	1	Power On/Off System Reset
PCB	1	HDD Backplane
Fans	6	2*4056+4*4028 ball fan
I/O Gasket	1	I/O Gasket
Expansion Slots	1	Cross card

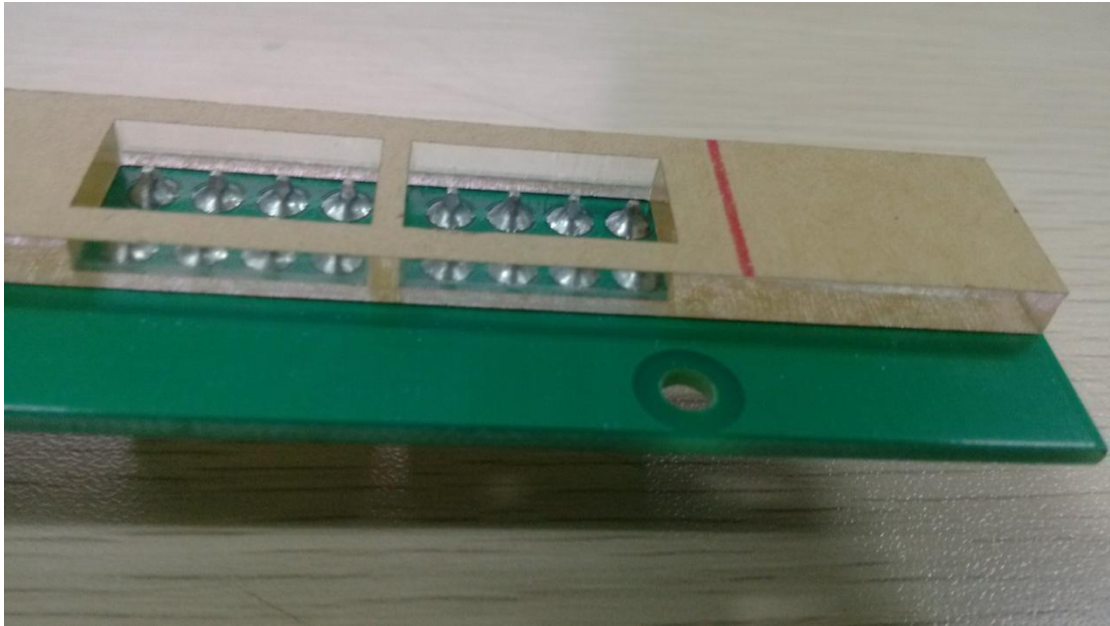
Picture:







PCB circuit board:



Box:



Kit:

